

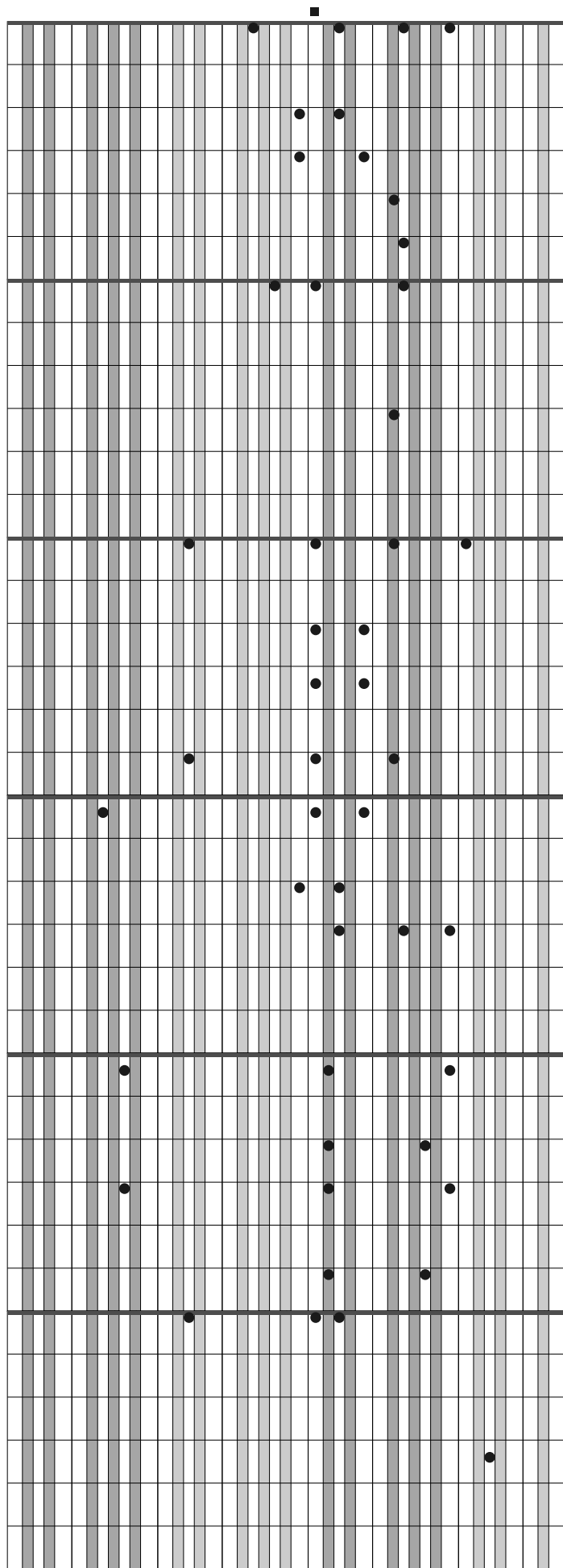
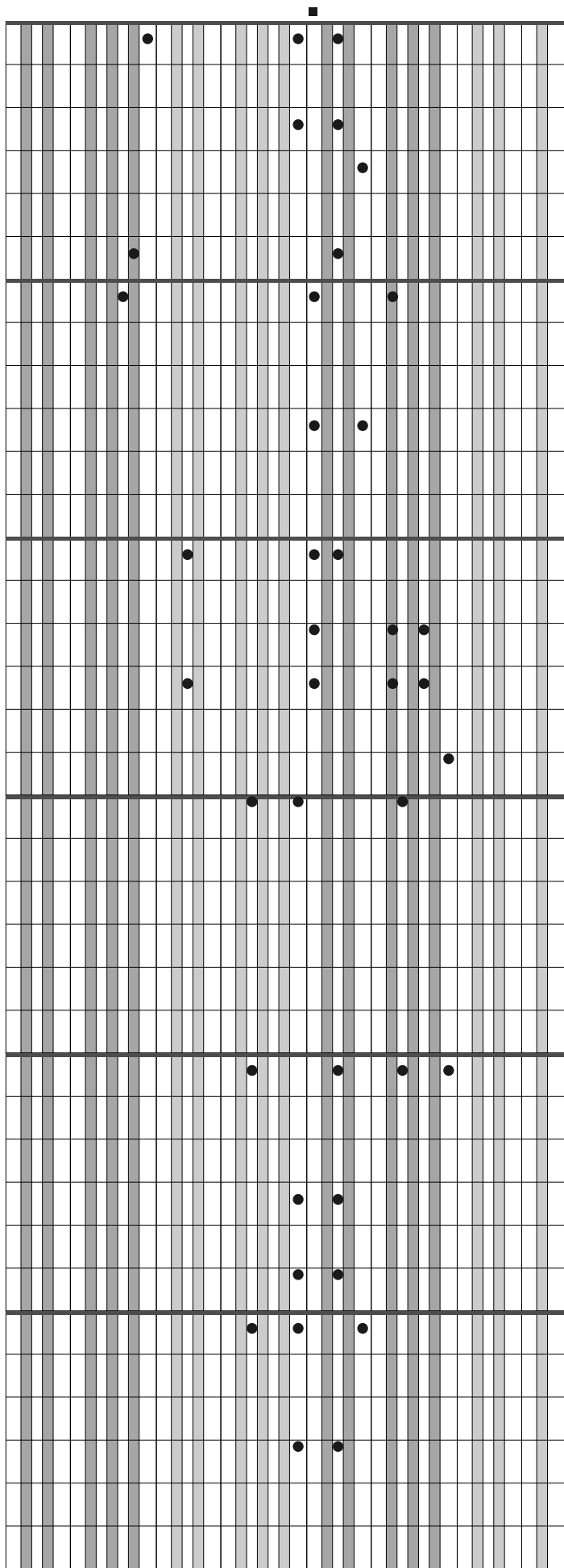
Letra: Lanta Wilson Smith

Música: Edwin O. Excell, 1851–1921

The left staff of the musical score consists of 12 systems of a five-line staff. Each system is divided into two measures by a vertical bar line. The notes are represented by black dots on the staff lines. The melody begins with a quarter note on the second line, followed by a quarter rest, and continues with various rhythmic patterns including eighth and sixteenth notes. The piece concludes with a final quarter note on the second line.

The right staff of the musical score consists of 12 systems of a five-line staff. Each system is divided into two measures by a vertical bar line. The notes are represented by black dots on the staff lines. The melody begins with a quarter note on the second line, followed by a quarter rest, and continues with various rhythmic patterns including eighth and sixteenth notes. The piece concludes with a final quarter note on the second line.

(continuação)



(continuação)

